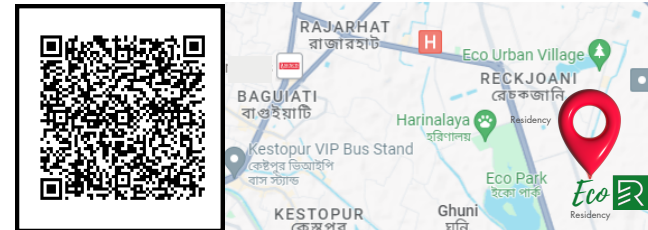


Call us at  
9330012951

# Eco Residency



## Location map



## Key Distances

- 6 km from Kolkata Airport
- 3 km from City Centre 2
- 2 km from Biswa Bangla Gate
- 2 km from Chinar Park Crossing
- 1.5 km from Akankha More/ Mangaldeep
- 1 km from Eco Park
- 1.5 km from Eco Space

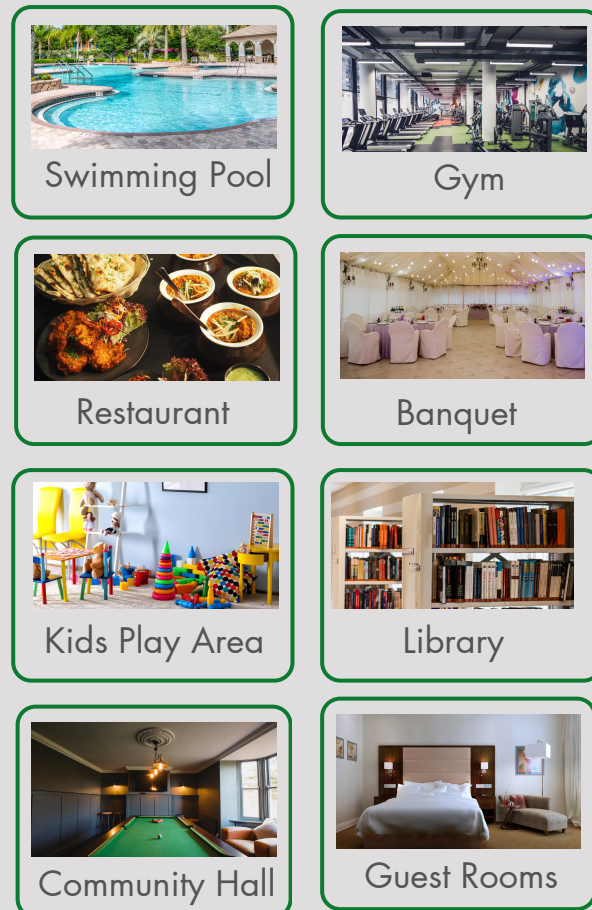
## Features

- Planned at Scale**  
400 individual houses distributed among 10 clusters.
- Community**  
Your own para in the city
- Freedom**  
Enjoy the freedom of living in your own house.
- Greenery**  
Green open space accessible within a few steps. Each cluster has its own green space.
- Safe**  
Absence of crossroads inside the campus drastically reduces chances of collision. 24-hour security available.



## Amenities

### For Residents only



### For Residents and Outsiders



MASTER PLAN OF PART OF JAGADISHPUR, JL. NO.-27, AND MOUZA - DHARSAMOKTARPUR, JL. NO. -26, P.S.- RAJARHAT AT PRESENTLY NEW TOWN, AA 2, DIST. NORTH 24 PARGANAS



MIHIR MITRA & ASSOCIATES  
ARCHITECTS : CONSULTANTS : TOWNPLANNERS  
22, ASHUTOSH CHOWDHURY AVENUE. KOL. -19  
MOBILE : 9339856798 / 7980828723

ALL INFRASTRUCTURE LIKE- WATER, ELECTRICITY, DRAINAGE, SEWERAGE, ACCESS TO ROAD- ALL THESE TO BE PROVIDED BY HIDCO

## House Type A (1.5 Katha plot)

### Floor Plan for House Type A



Ground Floor

Typical Floor plan for 1st and 2nd floors

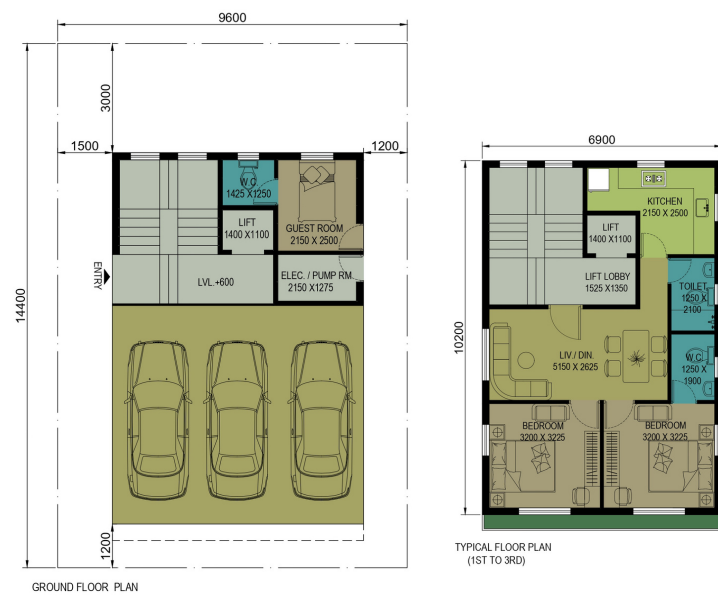


**The Club house**  
Games room,  
swimming pool,  
banquet, restaurant,  
kids play area,  
library

50,000 sq.ft  
(approx.) area

## House Type B (2 Katha plot)

### Floor Plan for House Type B



Ground Floor

Typical Floor plan for 1st, 2nd and 3rd floors



Market, shops,  
Health Clinic  
community hall,  
food court

50,000 sq.ft  
(approx.) area

## House Type C (2.5 Katha plot)

### Floor Plan for House Type C



Ground Floor

Typical Floor plan for 1st, 2nd and 3rd floors

## Specifications

**Foundation-** As per soil report

**Wall Finish-** Internal brickwork+Plaster of Paris

- External-weather proof paint

**Flooring-** Ceramic Vitrified tiles

**Kitchen-** Modular

**Toilets-** Ceramic Tiles+ Concealed Pipeline+Sanitaryware of Parryware or equivalent+C.P. fitting of Jaquar

**Doors-** Salwood frame and Blockwood shutters

**Window-** Aluminium glazed

**Electrical-** Concealed copper wiring+Standard Modular switches+ Provision of Air-Conditioners+Adequate Provision for geysers+Microwave oven+Kitchen appliances+Exhaust Fans

**Lifts-** Of reputed make

**Others-** Common Lighting+Security+Fire Protection+CCTV as per standard specifications